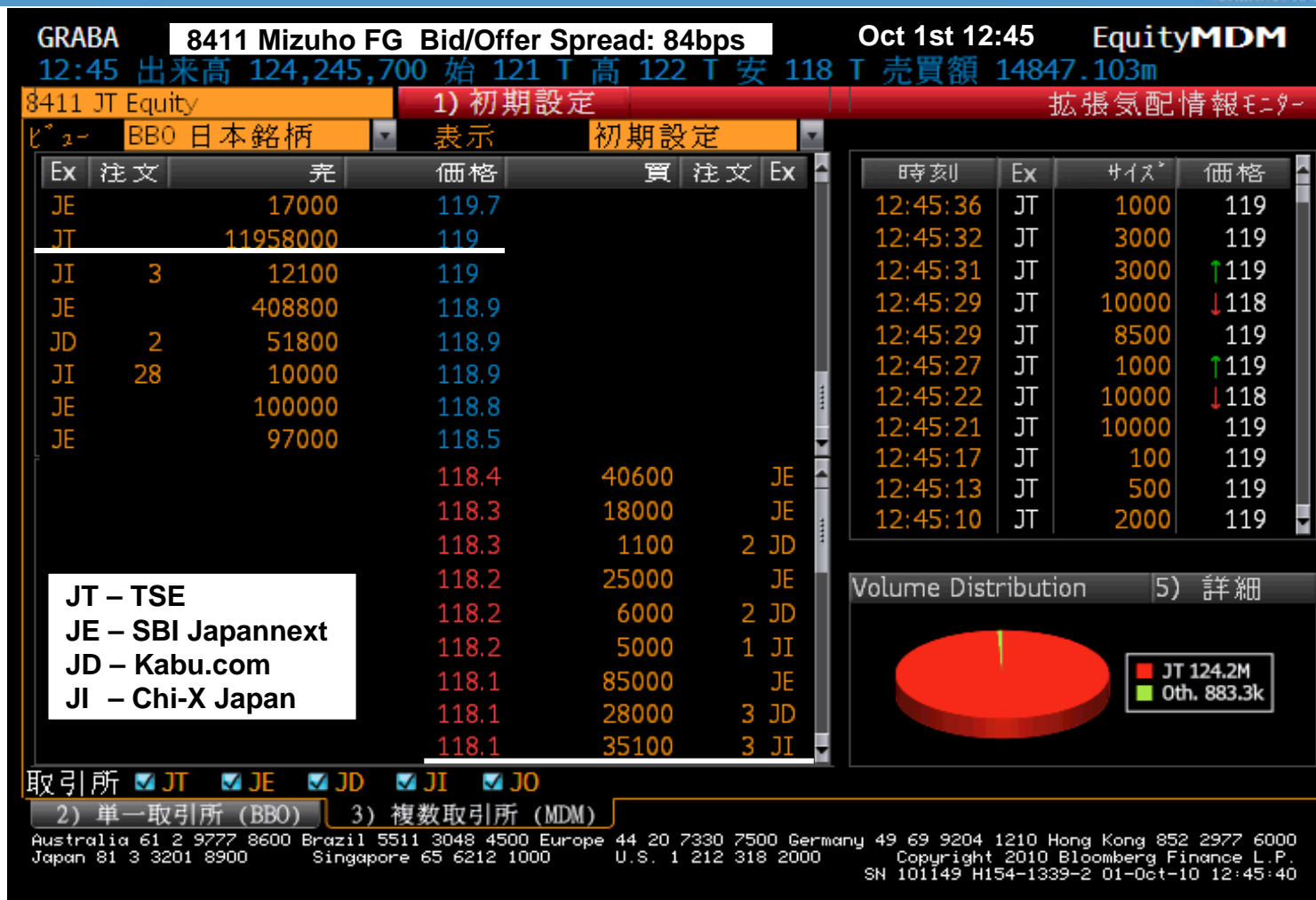


PTS Panel Discussion

Oct 6, 2010

Mizuho Securities



Mizuho Securities

Source: Bloomberg

Tick Size Comparisons

Price of Stock		Exchanges	PTS		
		TSE/OSE	SBI jnx (Daytime)	kabu.com	Chi-X Japan
above 1 yen	below 3,000 yen	1 yen	0.1 yen	0.1 yen	0.1 yen
above 3,000 yen	below 5,000 yen	5 yen	0.5 yen		
above 5,000 yen	below 30,000 yen	10 yen	1 yen	1 yen	1 yen
above 30,000 yen	below 50,000 yen	50 yen	5 yen		
above 50,000 yen	below 100,000 yen	100 yen	10 yen	10 yen	10 yen
above 100,000 yen	below 300,000 yen				
above 300,000 yen	below 500,000 yen	500 yen	50 yen		
above 500,000 yen	below 3,000,000 yen	1,000 yen	100 yen		
above 3,000,000 yen	below 5,000,000 yen	5,000 yen			
above 5,000,000 yen	below 30,000,000 yen	10,000 yen			
above 30,000,000 yen	below 50,000,000 yen	50,000 yen			
above 50,000,000 yen		100,000 yen			

Summary of each PTS

	Kabu.com	SBI Japannext	Chi-X Japan
PTS Start Date	15-Sep-06	20-Aug-07	29-Jul-10
# Tradable names	Top 1,700 stocks by value	3,772 stocks (as of Oct 1)	823 stocks (as of Oct 5)
Trading Hours	8:20 - 16:30	8:20 - 16:30	8:00 - 16:00
	8:00 - 8:50 (VWAP)	19:00-23:59 (night session)	
		24:30-26:00 (night session)	
Pricing Method	Auction Method	Continuous Matching	Continuous Matching
	Point in Time Matching		
Order Types	Mkt, Lmt, Funari, Opn, Cls	Lmt, FOK, IOC, ICEBERG	Lmt, FOK, IOC, ICEBERG, Pegged Orders
Limit High/Low	Same as exchanges	Same as exchanges	+/- 10% from exchange's reference prices
Short Sell Start Date	Oct 4th	Oct 4th (Short Exempt), Mid-Dec (Restricted Short)	Oct 15th
Market Data	Bloomberg, Reuters, Quick	Bloomberg, Reuters, Quick	Bloomberg, Reuters, Quick
Participating Brokers	10	11	9
Settlement	JSCC	JSCC	JSCC

Recent PTS Volumes

	Kabu.com	SBI Japannext	Chi-X
# of Names Executed (Daily Avg)	341.4	789.2	28.6
% in NK225	48.5%	27.7%	99.8%
% where Tick Size is 1 yen @Primary	86.7%	82.8%	84.0%
% b/a spread > 20bps @Primary	35.9%	31.5%	33.7%
Traded Value (Daily Avg)	657,264,630	8,746,557,742	32,677,751
%(by value) in NK225	85.2%	81.1%	97.6%
%(by value) where Tick Size is 1 yen	81.9%	76.4%	66.8%
%(by value) b/a spread > 20bps	54.2%	38.5%	20.9%

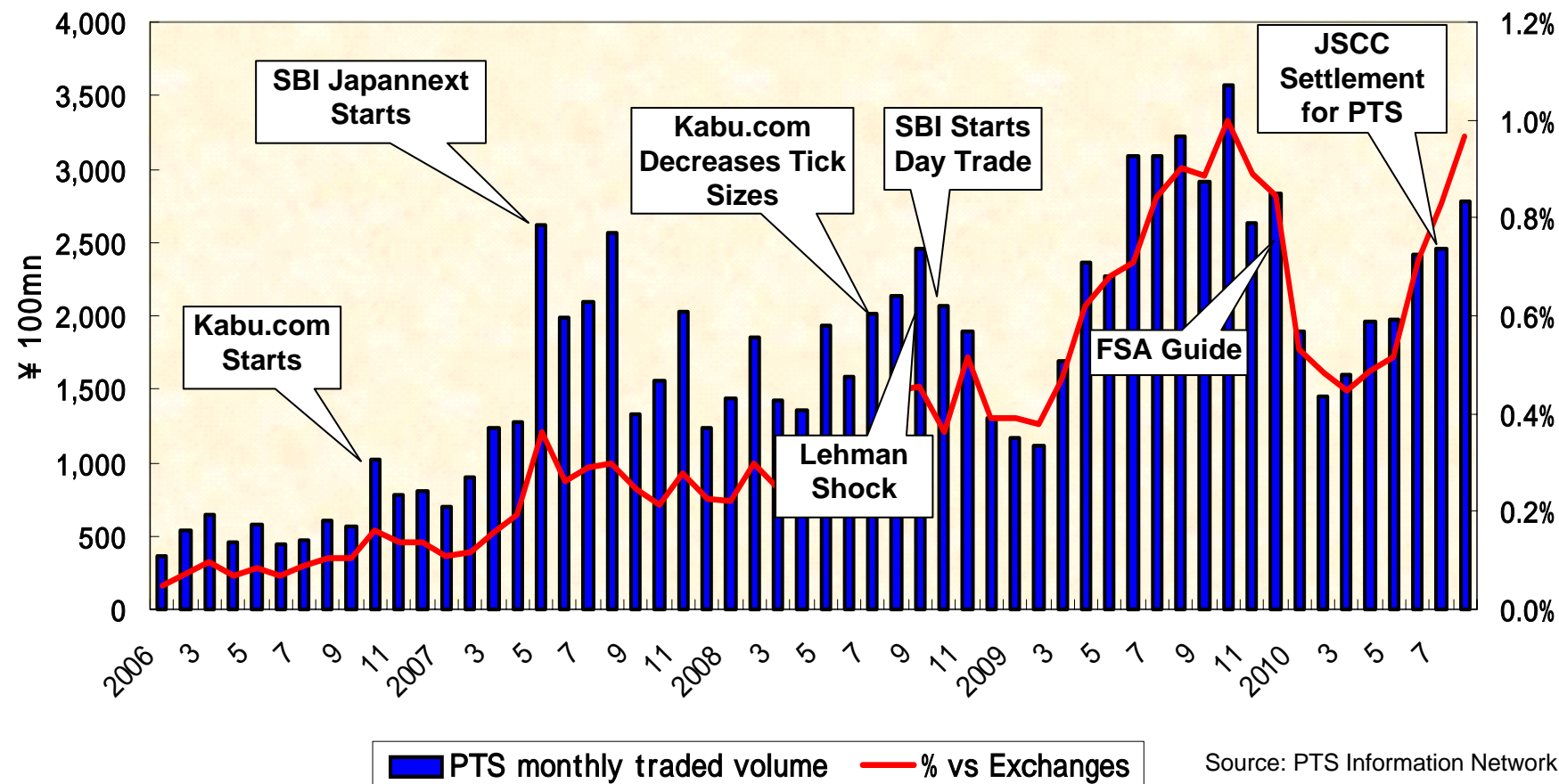
Source: Thomson Reuters

8/11 – 9/2

Mizuho Securities

CONFIDENTIAL

PTS Traded Volume



Source: PTS Information Network

Top Traded Names in Value Among PTS

Kabu.com			
Code	Description	Traded Value	vs TSE
6764	SANYO ELEC	403,364,001	1.17%
8411	MIZUHO FG	364,023,951	0.18%
7203	TOYOTA	354,513,271	0.11%
9020	JR EAST	155,919,801	0.22%
6501	HITACHI	133,630,301	0.10%
5401	NIPPON STEEL	122,040,901	0.17%
7270	FUJI HEAVY	117,280,101	0.30%
6502	TOSHIBA	111,676,901	0.07%
7261	MAZDA	109,450,801	0.32%
9062	NIPPON EXPRESS	107,482,301	0.53%

SBI Japannext			
Code	Description	Traded Value	vs TSE
7203	TOYOTA	4,181,526,201	1.29%
8411	MIZUHO FG	3,954,248,701	2.00%
8306	MIT UFJ FG	3,234,544,901	1.39%
6764	SANYO ELEC	3,173,395,001	9.17%
7751	CANON	2,297,347,001	1.11%
9432	NTT	1,695,597,001	1.72%
4502	TAKEDA	1,355,818,001	1.25%
8604	NOMURA HD	1,345,728,401	0.75%
8058	mitsubishi corp	1,277,377,301	0.69%
9020	JR EAST	1,128,802,001	1.61%

Chi-X Japan			
Code	Description	Traded Value	vs TSE
7751	CANON	78,576,251	0.04%
7951	YAMAHA	21,379,500	0.54%
5108	BRIDGESTONE	18,522,040	0.04%
6752	PANASONIC	17,418,091	0.02%
7203	TOYOTA	11,826,670	0.00%
6971	KYOCERA	11,445,000	0.01%
8053	SUMITOMO CORP	10,189,000	0.02%
6762	T D K	9,763,000	0.01%
7731	NIKON	9,415,800	0.02%
8830	SUMITOMO REALTY	8,277,000	0.01%

Mizuho Securities

13 business days from 8/11 – 8/31

Source: Thomson Reuters 6

CONFIDENTIAL

Contacts

Mizuho Securities Co., Ltd.
Electronic Trading Department, Consultant
Spyridon Mentzas
+81-3-5208-3314
spyridon.mentzas@mizuho-sc.com

This report has been prepared by Mizuho Securities Co., Ltd solely for the purpose of supplying information to institutional investors of Mizuho Securities and their affiliates to whom it is distributed.

Past performance is not indicative of future performance. Unless otherwise attributed, forecasts of future performance represent the trader's/salesperson's estimates based on factors they consider relevant. Actual performance may vary. Consequently, no expressed or implied warranty can be made regarding future performance. Opinions stated in this report are subject to change without notice.

Mizuho Securities Co., Ltd. All Rights Reserved. This document may not be altered, reproduced or redistributed, or passed on to any other party, in whole or in part, without the prior written consent of Mizuho Securities.

Mizuho Securities